

The Cardiovascular System

Components of Blood	Pathway of Blood	Heart Conduction	Anatomy	Blood Vessels
<u>\$100</u>	<u>\$100</u>	<u>\$100</u>	<u>\$100</u>	<u>\$100</u>
<u>\$200</u>	<u>\$200</u>	<u>\$200</u>	<u>\$200</u>	<u>\$200</u>
<u>\$300</u>	<u>\$300</u>	<u>\$300</u>	<u>\$300</u>	<u>\$300</u>
<u>\$400</u>	<u>\$400</u>	<u>\$400</u>	<u>\$400</u>	<u>\$400</u>
<u>\$500</u>	<u>\$500</u>	<u>\$500</u>	<u>\$500</u>	<u>\$500</u>

FINAL ROUND

Components of Blood:
\$100 Question

What percentage of our blood is plasma?

- a. 90%
- b. 55%
- c. 45%
- d. 65%

ANSWER

BACK TO
GAME

Components of Blood:
\$100 Answer

What percentage of our blood is plasma?

- a. 90%
- b. 55%**
- c. 45%
- d. 65%

BACK TO
GAME

Components of Blood:
\$200 Question

The buffy coat contains _____.

- a. leukocytes
- b. erythrocytes
- c. platelets
- d. both leukocytes
and platelets

ANSWER

BACK TO
GAME

Components of Blood:
\$200 Answer

The buffy coat contains _____.

- a. leukocytes
- b. erythrocytes
- c. platelets
- d. both leukocytes
and platelets**

BACK TO
GAME

Components of Blood:
\$300 Question

The production of red blood cells is called
_____.

- a. hematopoiesis
- b. erythropoiesis
- c. lymphopoiesis
- d. leukopoiesis

ANSWER

BACK TO
GAME

Components of Blood:
\$300 Answer

The production of red blood cells is called
_____.

- a. hematopoiesis
- b. erythropoiesis**
- c. lymphopoiesis
- d. leukopoiesis

BACK TO
GAME

Components of Blood:
\$400 Question

All of the following are granulocytes
except:

- a. monocytes.
- b. eosinophils.
- c. neutrophils.
- d. basophils.

ANSWER

BACK TO
GAME

Components of Blood:
\$400 Answer

All of the following are granulocytes
except:

- a. **monocytes.**
- b. eosinophils.
- c. neutrophils.
- d. basophils.

BACK TO
GAME

Components of Blood:
\$500 Question

Which of the following blood components is a complete cell?

- a. Erythrocyte
- b. Leukocyte
- c. Platelet
- d. All are complete cells.

ANSWER

BACK TO
GAME

Components of Blood:
\$500 Answer

Which of the following blood components is a complete cell?

- a. Erythrocyte
- b. Leukocyte**
- c. Platelet
- d. All are complete cells.

BACK TO
GAME

Pathway of Blood
\$100 Question

Blood is carried to the heart by these vessels.

- a. Arteries
- b. Veins
- c. Auricles
- d. Capillaries

ANSWER

BACK TO
GAME

Blood is carried to the heart by these vessels.

- a. Arteries
- b. Veins**
- c. Auricles
- d. Capillaries

Pathway of Blood :
\$200 Question

All oxygenated blood returns to the heart via the:

- a. pulmonary artery.
- b. pulmonary veins.
- c. aorta.
- d. venae cavae.

ANSWER

BACK TO
GAME

Pathway of Blood :
\$200 Answer

All oxygenated blood returns to the heart via the:

- a. pulmonary artery.
- b. pulmonary veins.**
- c. aorta.
- d. venae cavae.

BACK TO
GAME

Pathway of Blood
\$300 Question

Blood being pumped out of the left ventricle enters the:

- a. pulmonary artery.
- b. aorta.
- c. coronary sinus.
- d. venae cavae.

ANSWER

BACK TO
GAME

Blood being pumped out of the left ventricle enters the:

- a. pulmonary artery.
- b. aorta.**
- c. coronary sinus.
- d. venae cavae.

Pathway of Blood
\$400 Question

Blood is prevented from flowing back into the left ventricle by the:

- a. aortic semilunar valve.
- b. tricuspid valve.
- c. pulmonary semilunar valve.
- d. mitral valve.

ANSWER

BACK TO
GAME

Blood is prevented from flowing back into the left ventricle by the:

- a. aortic semilunar valve.**
- b. tricuspid valve.
- c. pulmonary semilunar valve.
- d. mitral valve.

Pathway of Blood
\$500 Question

Deoxygenated blood from the myocardium enters the right atrium through the:

- a. cardiac veins.
- b. coronary arteries.
- c. coronary sinus.
- d. superior vena cava.

ANSWER

BACK TO
GAME

Deoxygenated blood from the myocardium enters the right atrium through the:

- a. cardiac veins.
- b. coronary arteries.
- c. coronary sinus.**
- d. superior vena cava.

Heart Conduction
\$100 Question

This area is known as the pacemaker of the heart.

- a. AV node
- b. SA node
- c. Bundle of His
- d. Purkinje fibers

ANSWER

BACK TO
GAME

This area is known as the pacemaker of the heart.

- a. AV node
- b. SA node**
- c. Bundle of His
- d. Purkinje fibers

Heart Conduction:
\$200 Question

The bundle of His is located here.

- a. Interatrial septum
- b. Interventricular septum
- c. Floor of the right atrium
- d. Apex of the heart

ANSWER

BACK TO
GAME

Heart Conduction:
\$200 Answer

The bundle of His is located here.

- a. Interatrial septum
- b. Interventricular septum**
- c. Floor of the right atrium
- d. Apex of the heart

BACK TO
GAME

Heart Conduction:
\$300 Question

Ventricular depolarization occurs during this period of time, seen on an EKG.

- a. P wave
- b. QRS complex
- c. T wave
- d. S-T segment

ANSWER

BACK TO
GAME

Ventricular depolarization occurs during this period of time, seen on an EKG.

- a. P wave
- b. QRS complex**
- c. T wave
- d. S-T segment

Nerve impulses are directly supplied to the papillary muscles by the:

- a. SA node.
- b. Purkinje fibers.
- c. AV node.
- d. bundle of His.

ANSWER

BACK TO
GAME

Heart Conduction
\$400 Answer

Nerve impulses are directly supplied to the papillary muscles by the:

- a. SA node.
- b. Purkinje fibers.**
- c. AV node.
- d. bundle of His.

BACK TO
GAME

The amount of blood pumped out of each ventricle in one minute is called:

- a. stroke volume.
- b. cardiac output.
- c. cardiac reserve.
- d. end diastolic volume.

ANSWER

BACK TO
GAME

Heart Conduction:
\$500 Answer

The amount of blood pumped out of each ventricle in one minute is called:

- a. stroke volume.
- b. cardiac output.**
- c. cardiac reserve.
- d. end diastolic volume.

BACK TO
GAME

Anatomy:

\$100 Question

Platelets are fragments of which cells?

- a. Megakaryocytes
- b. Reticulocytes
- c. Leukocytes
- d. Thrombocytes

ANSWER

BACK TO
GAME

Anatomy:

\$100 Answer

Platelets are fragments of which cells?

- a. Megakaryocytes**
- b. Reticulocytes
- c. Leukocytes
- d. Thrombocytes

BACK TO
GAME

Anatomy:

\$200 Question

The renal vein and artery take blood to
and from the_____.

- a. brain
- b. liver
- c. kidney
- d. face

ANSWER

BACK TO
GAME

Anatomy:
\$200 Answer

The renal vein and artery take blood to
and from the_____.

- a. brain
- b. liver
- c. kidney**
- d. face

BACK TO
GAME

Anatomy:

\$300 Question

Which side of the heart is the largest?

- a. right
- b. left
- c. top
- d. bottom

ANSWER

BACK TO
GAME

Anatomy:

\$300 Answer

Which side of the heart is the largest?

a. right

b. left

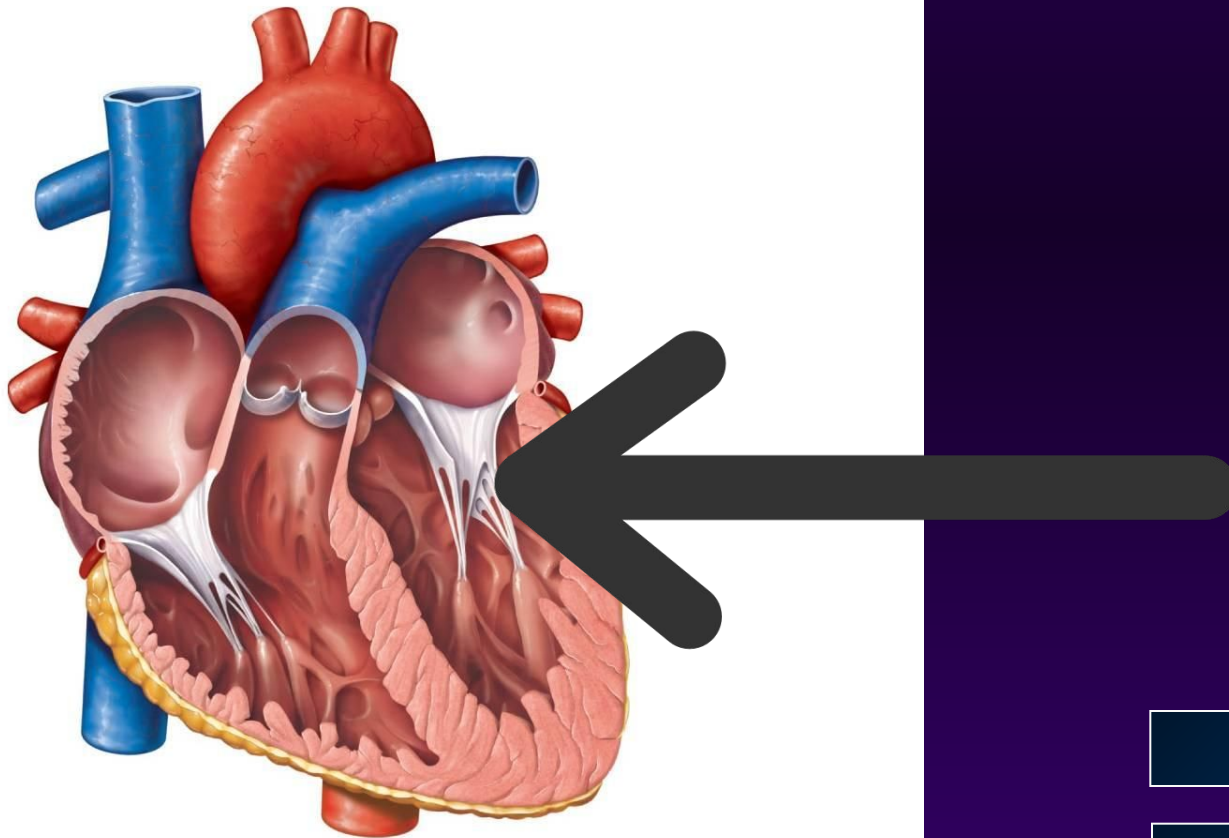
c. top

d. bottom

BACK TO
GAME

Anatomy:
\$400 Question

The following structures are called what?



ANSWER

BACK TO
GAME

Anatomy:
\$400 Answer

Chordae tendinae (heart strings)

BACK TO
GAME

Anatomy:

\$500 Question

What chamber receives deoxygenated blood from the body?

- a. Left atrium
- b. Left ventricle
- c. Right atrium
- d. Right ventricle

ANSWER

BACK TO
GAME

Anatomy:
\$500 Answer

What chamber receives deoxygenated blood from the body?

- a. Left atrium
- b. Left ventricle
- c. Right atrium**
- d. Right ventricle

BACK TO
GAME

Blood Vessels:

\$100 Question

These are the smallest blood vessels in our body.

- a. Venules
- b. Arterioles
- c. Capillaries
- d. Venous sinuses

ANSWER

BACK TO
GAME

Blood Vessels:
\$100 Answer

These are the smallest blood vessels in our body.

- a. Venules
- b. Arterioles
- c. Capillaries**
- d. Venous sinuses

BACK TO
GAME

Blood Vessels:

\$200 Question

All of the following would be found in large arteries *except*:

- a. elastic tissue.
- b. smooth muscle.
- c. endothelium.
- d. valves.

ANSWER

BACK TO
GAME

Blood Vessels:
\$200 Answer

All of the following would be found in large arteries *except*:

- a. elastic tissue.
- b. smooth muscle.
- c. endothelium.
- d. valves.**

BACK TO
GAME

Blood Vessels:

\$300 Question

These vessels carry blood toward the heart.

- a. Arterioles
- b. Capillaries
- c. Arteries
- d. Veins

ANSWER

BACK TO
GAME

Blood Vessels:
\$300 Answer

These vessels carry blood toward the heart.

- a. Arterioles
- b. Capillaries
- c. Arteries
- d. Veins**

BACK TO
GAME

Blood Vessels:
\$400 Question

The exchange between blood vessels and cells occurs here.

- a. Arterioles
- b. Capillaries
- c. Arteries
- d. All of the above

ANSWER

BACK TO
GAME

Blood Vessels:
\$400 Answer

The exchange between blood vessels and cells occurs here.

- a. Arterioles
- b. Capillaries**
- c. Arteries
- d. All of the above

BACK TO
GAME

Blood Vessels:

\$500 Question

If you have a blood pressure of 120/80 mmHg, what is your diastolic pressure?

- a. 40 mmHg
- b. 80 mmHg
- c. 120 mmHg
- d. 200 mmHg

ANSWER

BACK TO
GAME

Blood Vessels:
\$500 Answer

If you have a blood pressure of 120/80 mmHg, what is your diastolic pressure?

- a. 40 mmHg
- b. 80 mmHg**
- c. 120 mmHg
- d. 200 mmHg

BACK TO
GAME

FINAL ROUND Question

If John has O positive blood, he will have which of the following antibodies in his blood?

- a. Anti-Rh
- b. Anti-A
- c. Anti-B
- d. Both anti-A and anti-B

ANSWER

BACK TO
GAME

FINAL ROUND Answer

If John has O positive blood, he will have which of the following antibodies in his blood?

- a. Anti-Rh
- b. Anti-A
- c. Anti-B
- d. Both anti-A and anti-B**

BACK TO
GAME