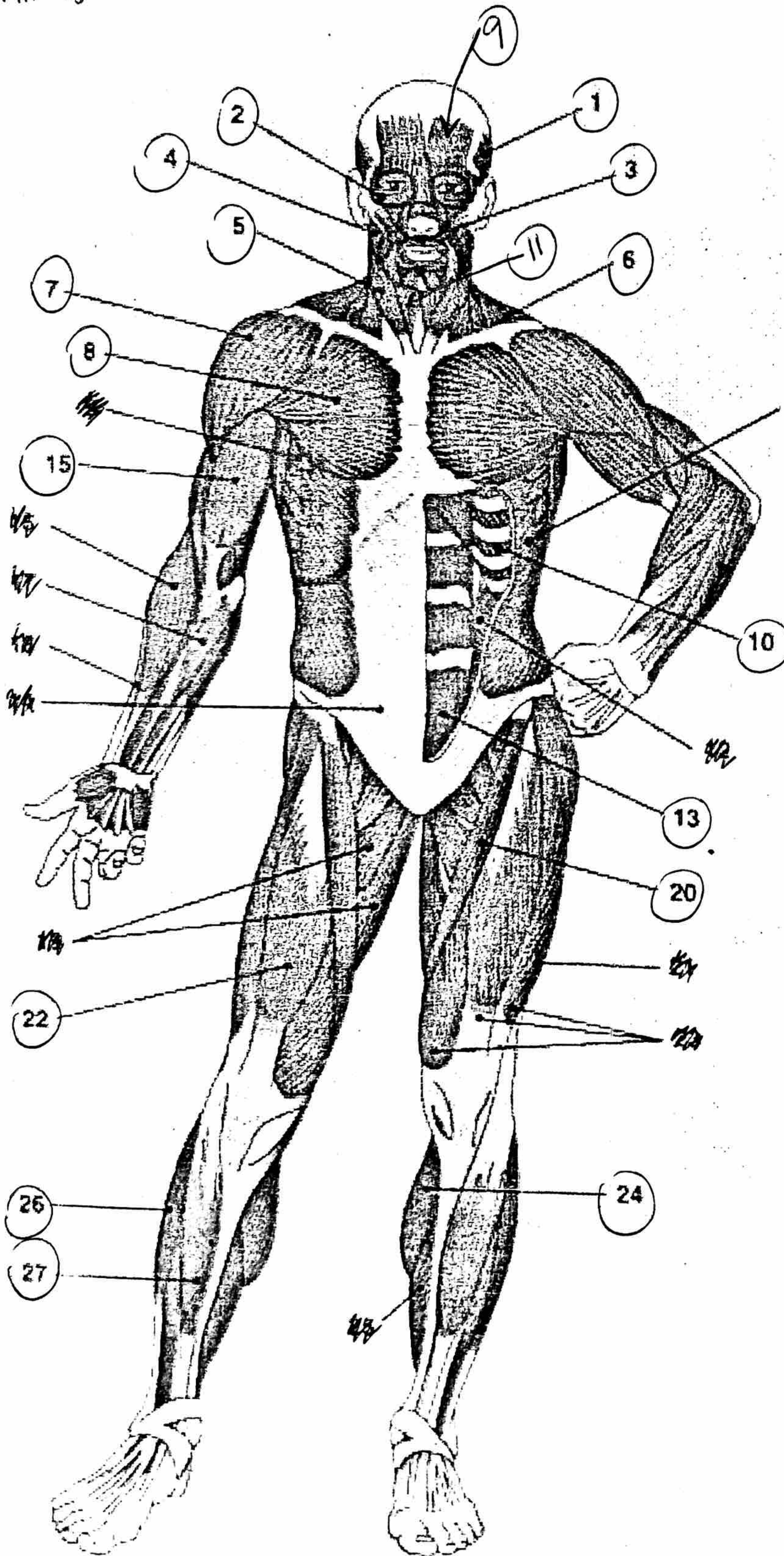


Labeling

Name

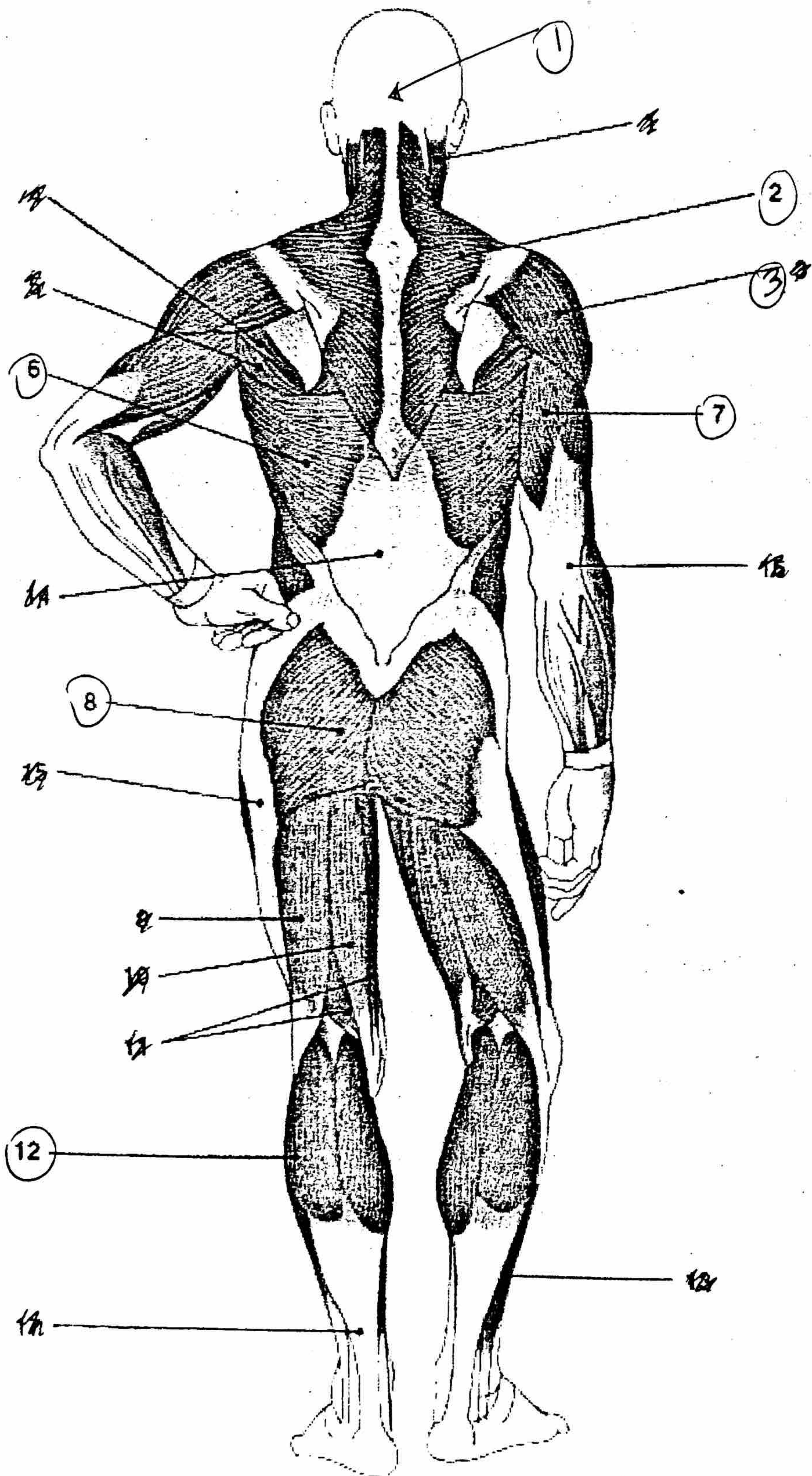
KEY

HONORS  
PHYSIOLOGY  
UNIT 5



Superficial muscles, anterior view

1. Temporalis
2. Orbicularis oculi
3. Zygomaticus
4. Masseter
5. Sternocleidomastoid
6. Trapezius
7. Deltoid
8. Pectoralis major
9. Epicranius, frontal belly
10. Intercostals
11. Sternohyoid
12. Orbicularis oris
13. Rectus abdominus
15. Biceps brachii
20. \_\_\_\_\_
22. \_\_\_\_\_
24. Sartorius
26. Rectus femoris
27. \_\_\_\_\_
28. Gastrocnemius
29. \_\_\_\_\_
30. Fibularis longus
31. Tibialis anterior



①. Epicranius, occipital belly

②. Trapezius

\*③. Deltoid

④. \_\_\_\_\_

⑤. \_\_\_\_\_

⑥. Latissimus dorsi

⑦. Triceps brachii

⑧. Gluteus maximus

⑨. \_\_\_\_\_

⑩. \_\_\_\_\_

⑪. \_\_\_\_\_

⑫. Gastrocnemius

⑬. \_\_\_\_\_

⑭. \_\_\_\_\_

⑮. \_\_\_\_\_

⑯. \_\_\_\_\_

⑰. \_\_\_\_\_

⑱. \_\_\_\_\_

⑲. \_\_\_\_\_

⑳. \_\_\_\_\_

㉑. \_\_\_\_\_

㉒. \_\_\_\_\_

㉓. \_\_\_\_\_

㉔. \_\_\_\_\_

㉕. \_\_\_\_\_

㉖. \_\_\_\_\_

㉗. \_\_\_\_\_

㉘. \_\_\_\_\_

㉙. \_\_\_\_\_

㉚. \_\_\_\_\_

㉛. \_\_\_\_\_

Muscular System

Superficial muscles, posterior view