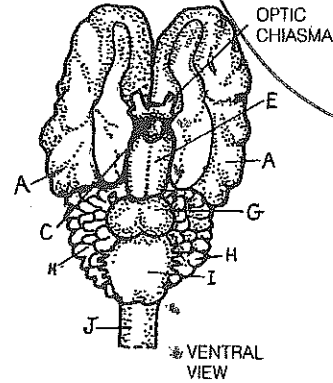
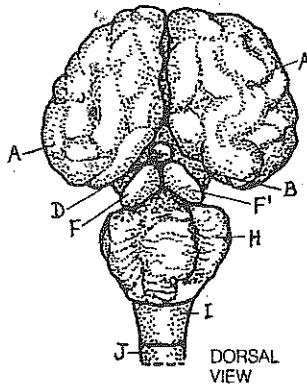
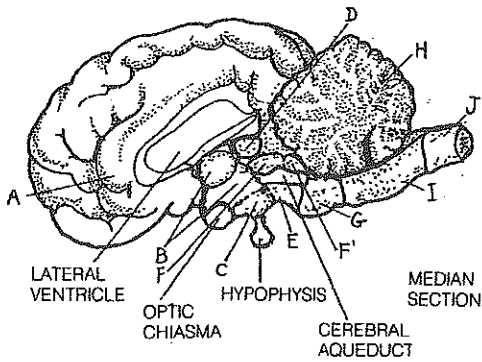


FETAL PIG: IX NERVOUS SYSTEM.

Class Copy



CENTRAL NERVOUS SYSTEM ★ BRAIN ★

FOREBRAIN ★

- CEREBRAL HEMISPHERE_A
- THALAMUS_B
- HYPOTHALAMUS_C
- PINEAL GLAND_D

MIDBRAIN ★

- CEREBRAL PEDUNCLE_E
- SUPERIOR/INFERIOR COLLICULUS_F

HINDBRAIN ★

- PONS_G
- CEREBELLUM_H
- MEDULLA OBLONGATA_I
- SPINAL CORD_J

PERIPHERAL NERVOUS SYSTEM ★

CRANIAL NERVES_K

SPINAL NERVES_L

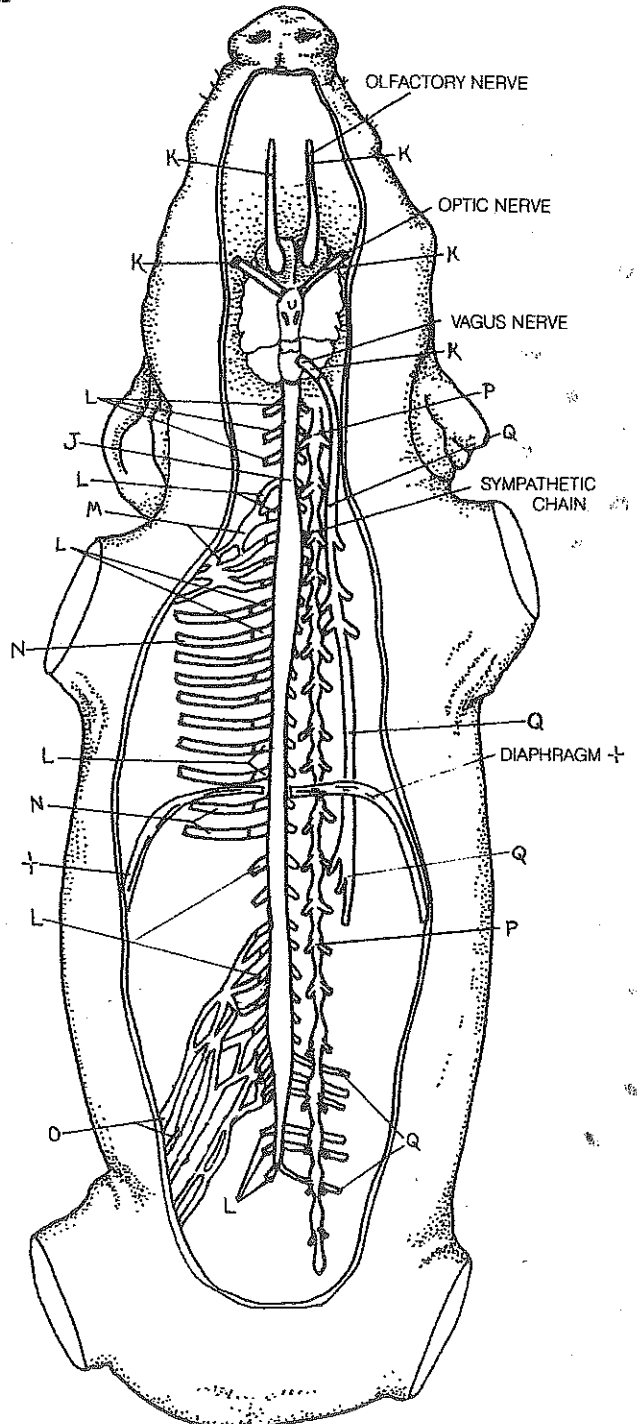
BRACHIAL PLEXUS_M

INTERCOSTAL NERVE_N

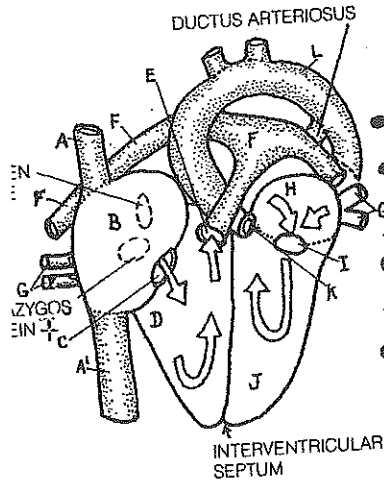
LUMBAR/SACRAL PLEXUS_O

AUTONOMIC NERVOUS SYSTEM ★

- SYMPATHETIC DIVISION_P
- PARASYMPATHETIC DIVISION_Q



FETAL PIG: IV HEART AND ARTERIAL SYSTEM.

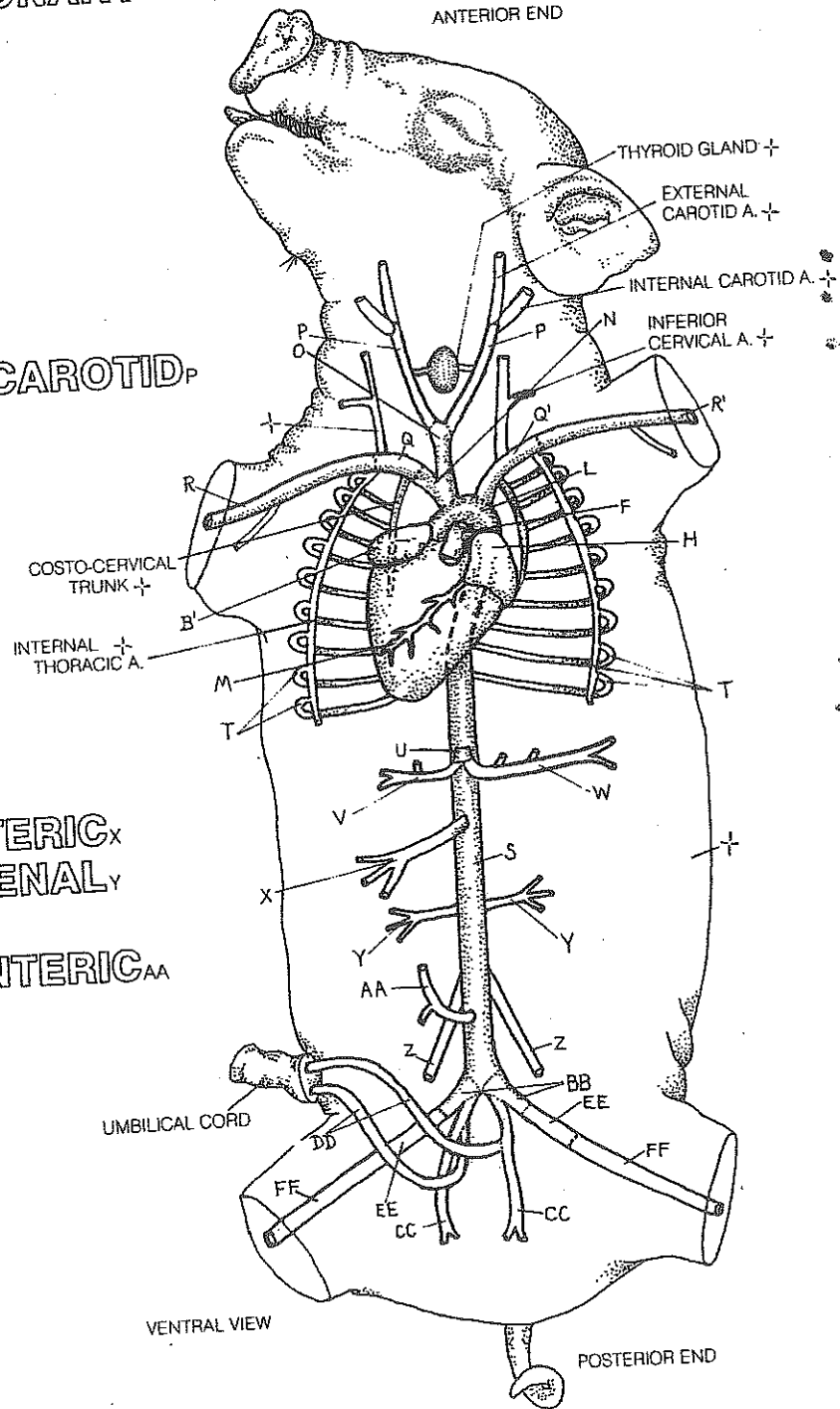


- PRECAVAL VEIN_A
- POSTCAVAL VEIN_{A'}
- R. ATRIUM/AURICLE_{B'}
- TRICUSPID VALVE_C
- R. VENTRICLE_D
- PULMONARY VALVE_E
- PUL. TRUNK/ART._F
- PULMONARY VEINS_G

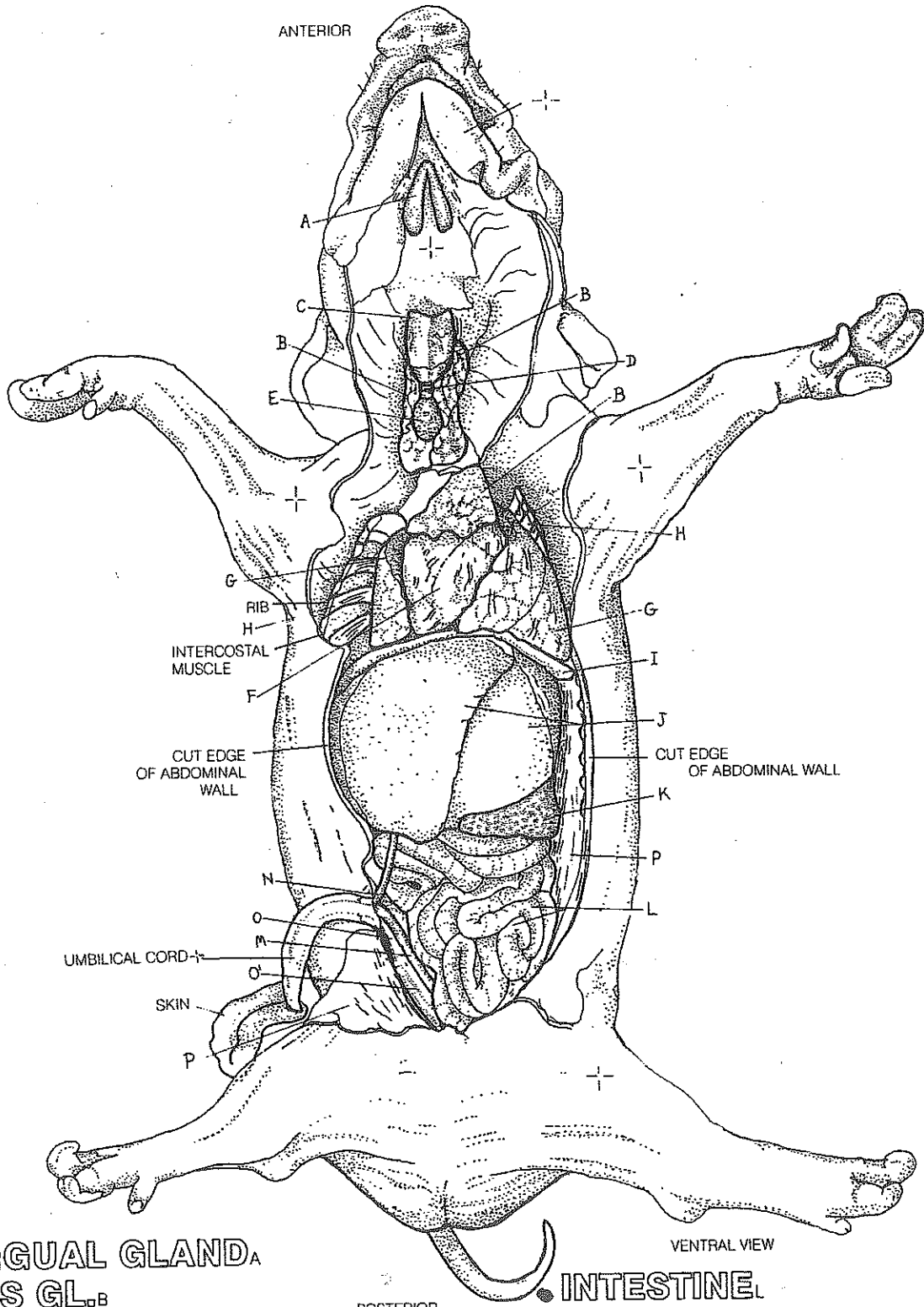
- L. ATRIUM/AURICLE_H
- BICUSPID VALVE_I
- L. VENTRICLE_J
- AORTIC VALVE_K
- AORTIC ARCH_L

MAJOR ARTERIES*

- AORTIC ARCH
- CORONARY_M
- BRACHIOCEPHALIC_N
- BICAROTID_O
- L./R. COMMON CAROTID_P
- R. SUBCLAVIAN_Q
- R. BRACHIAL_R
- L. SUBCLAVIAN_{Q'}
- L. BRACHIAL_{R'}
- DORSAL AORTA_S
- INTERCOSTAL_T
- COELIAC TRUNK_U
- HEPATIC_V
- SPLENIC_W
- ANTERIOR MESENTERIC_X
- RIGHT AND LEFT RENAL_Y
- GONADAL_Z
- POSTERIOR MESENTERIC_{AA}
- INTERNAL ILIAC_{BB}
- UMBILICAL_{CC}
- EXTERNAL ILIAC_{DD}
- FEMORAL_{EE}



FETAL PIG: II SUPERFICIAL DISSECTION.



- | | | |
|--|---|---|
| <ul style="list-style-type: none"> ● SUBLINGUAL GLAND_A ● THYMUS GL._B ● LARYNX_C ● TRACHEA_D ● THYROID GL._E ● HEART_F ● LUNGS_G | <ul style="list-style-type: none"> ● PARIETAL PLEURA_H ● DIAPHRAGM_I ● LIVER_J ● SPLEEN_K | <ul style="list-style-type: none"> ● INTESTINE_L ● UMBILICAL ARTERY_M ● UMBILICAL VEIN_N ● ALLANTOIC DUCT_O ● URINARY BLADDER_P ● PARIETAL PERITONEUM_P |
|--|---|---|

ETAL PIG: III DEEP DISSECTION.

HORAX
PHRENIC NERVE_A
PRECAVAL VEIN_B
HEART_{*}

- L./R. AURICLE_C
- L./R. VENTRICLE_D

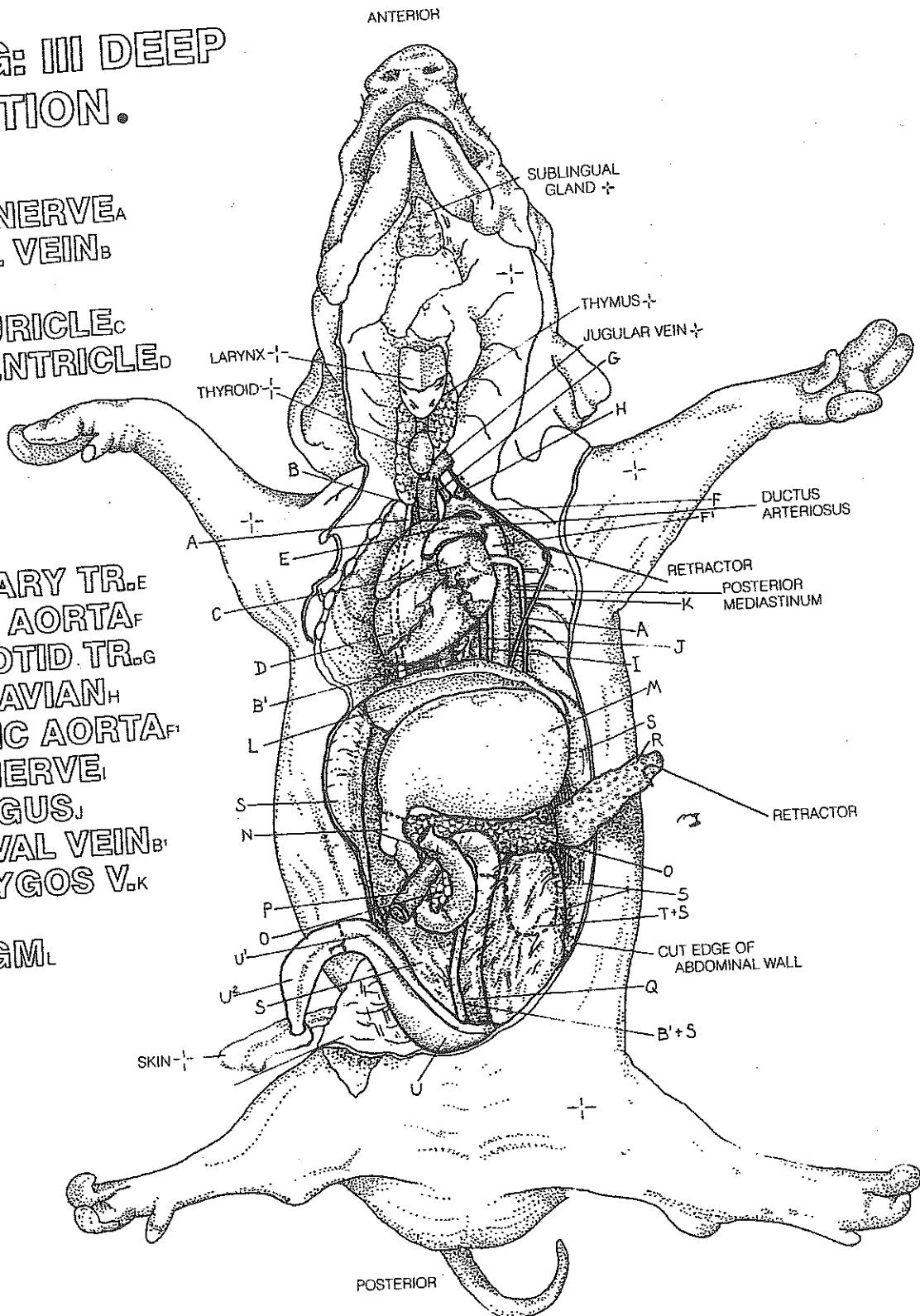
PULMONARY TR._E
• ARCH OF AORTA_F
BICAROTID TR._G
SUBCLAVIAN_H
THORACIC AORTA_F
VAGUS NERVE_I
• ESOPHAGUS_J
POSTCAVAL VEIN_{B'}
HEMIAZYGOS V._K

• DIAPHRAGM_L

ABDOMEN_{*}
• STOMACH_M
• DUODENUM_N
• PANCREAS_O

• LARGE INTESTINE_P
• RECTUM_Q
• SPLEEN_R
PARIETAL PERITONEUM_S

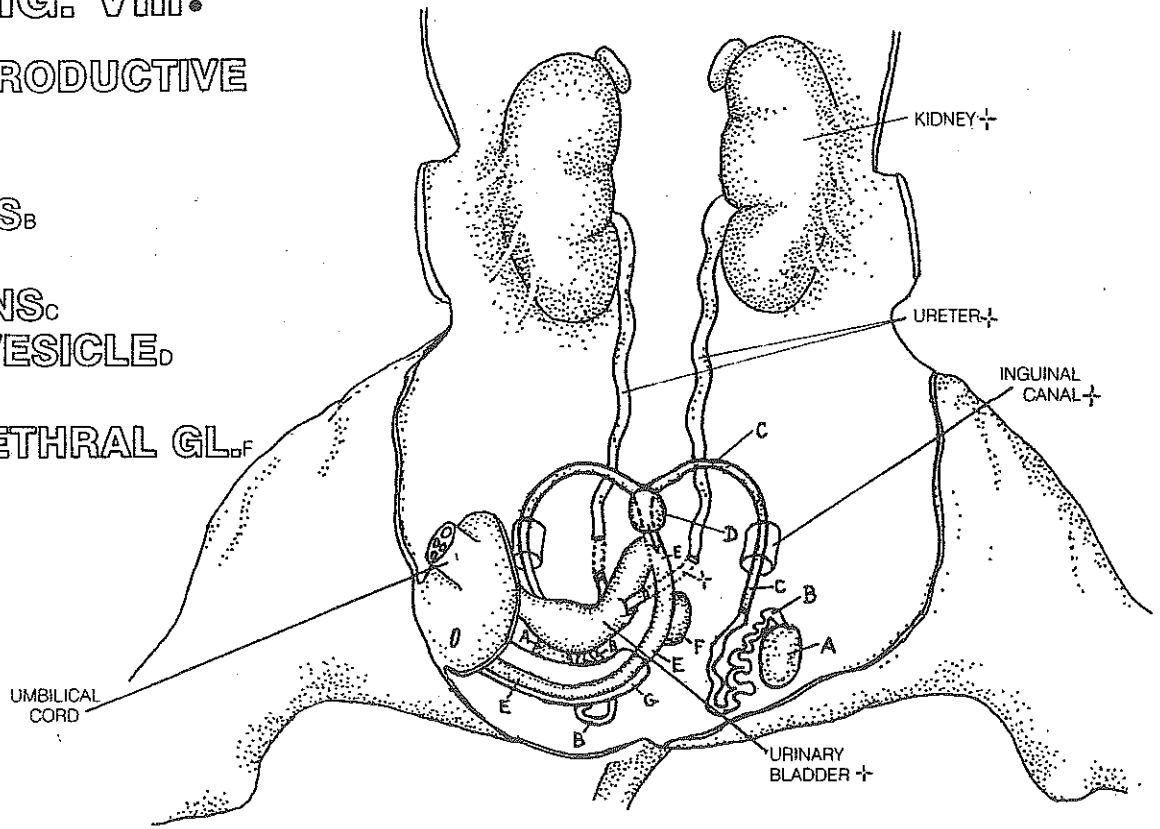
• KIDNEY_T
• URINARY BLADDER_U
UMBILICAL ARTERIES_{U'}
UMBILICAL CORD_{U''}



FETAL PIG: VIII.

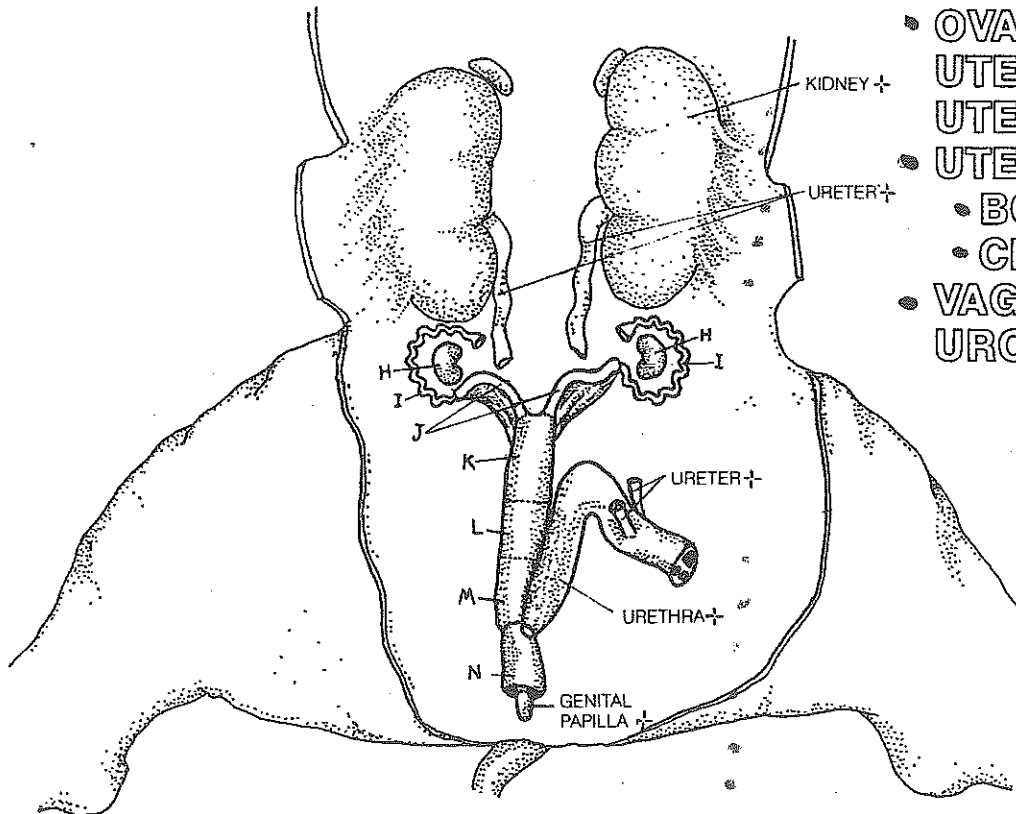
MALE REPRODUCTIVE SYSTEM.

- TESTIS_A
- EPIDIDYMIS_B
- DUCTUS DEFERENS_C
- SEMINAL VESICLE_D
- URETHRA_E
- BULBOURETHRAL GL._F
- PENIS_G

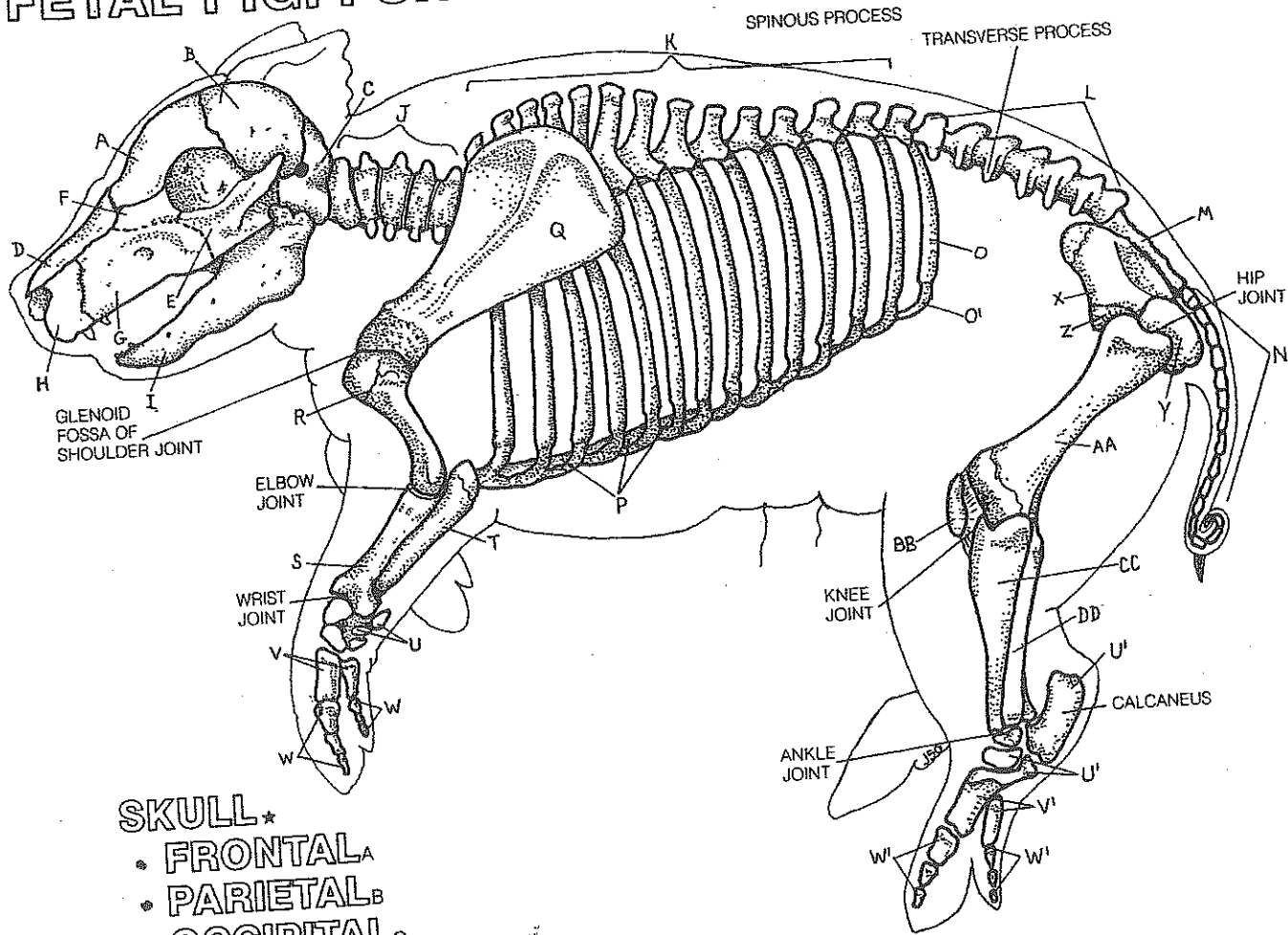


FEMALE REPRODUCTIVE SYSTEM.

- OVARY_H
- UTERINE TUBE_I
- UTERINE HORN_J
- UTERUS_K
 - BODY_L
 - CERVIX_M
- VAGINA_N
- UROGENITAL SINUS_O



FETAL PIG: I SKELETON.



SKULL *

- FRONTAL_A
- PARIETAL_B
- OCCIPITAL_C
- NASAL_D
- ZYGOMATIC_E
- LACRIMAL_F
- MAXILLA_G
- PREMAXILLA_H
- MANDIBULAR_I

VERTEBRAL COLUMN *

- CERVICAL VERT._J
- THORACIC VERT._K
- LUMBAR VERT._L
- SACRAL VERT._M
- CAUDAL VERT._N
- RIBS./COSTAL CART._O
- STERNUM_P

PECTORAL GIRDLE *

- SCAPULA_Q
- HUMERUS_R

- RADIUS_S
- ULNA_T
- CARPUS_U
- METACARPALS_V
- PHALANGES_W

PELVIC GIRDLE *

- ILIUM_X
- ISCHIUM_Y
- PUBIS_Z
- FEMUR_{AA}
- PATELLA_{BB}
- TIBIA_{CC}
- FIBULA_{DD}
- TARSUS_{U'}
- METATARSALS_{V'}
- PHALANGES_{W'}

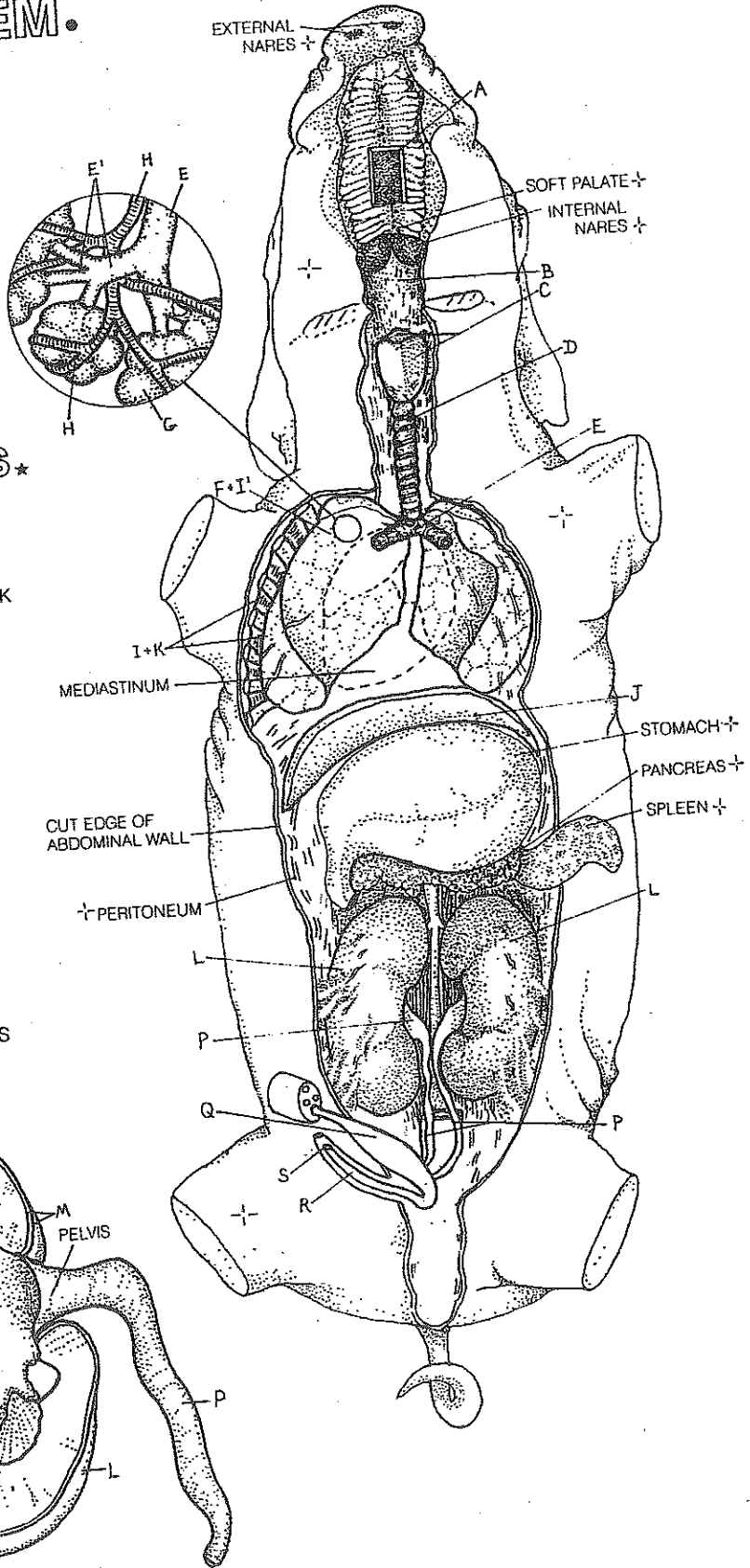
FETAL PIG: VI RESPIRATORY SYSTEM.

- NASAL CAVITY_A
- PHARYNX_B
- LARYNX_C
- TRACHEA_D
- BRONCHI_E/BRONCHIOLE_{E'}
- LUNGS_F
 - AIR SAC_G
 - BLOOD VESSELS_H

- ### SUPPORTING STRUCTURES.*
- PLEURA: PAR._I/VISC._{I'}
 - DIAPHRAGM_J
 - INTERCOSTAL MUSCLES_K

URINARY SYSTEM.

- KIDNEY
 - CORTEX_M
 - MEDULLA_N
 - CALYCES.
- URETER_P
- URINARY BLADDER_Q
- URETHRA_R
- UROGENITAL OPENING_S



LONGITUDINAL SECTION THROUGH KIDNEY

FETAL PIG: VII DIGESTIVE SYSTEM.

ALIMENTARY CANAL*

- ABDOMINAL ESOPHAGUS_A
- STOMACH_B
- SMALL INTESTINE*
- DUODENUM_C
- JEJUNUM_C/ILEUM_C
- LARGE INTESTINE_D
- RECTUM_E
- ANUS_F

GLANDS*

- LIVER_G
- GALLBLADDER_H
- CYSTIC DUCT
- HEPATIC DUCT
- COMMON BILE DUCT_K
- PANCREAS_L
- SPLEEN_M

SUPPORTING STRUCTURE*

- PARIETAL PERITONEUM_N
- OMENTUM.
- MESENTERY_P

