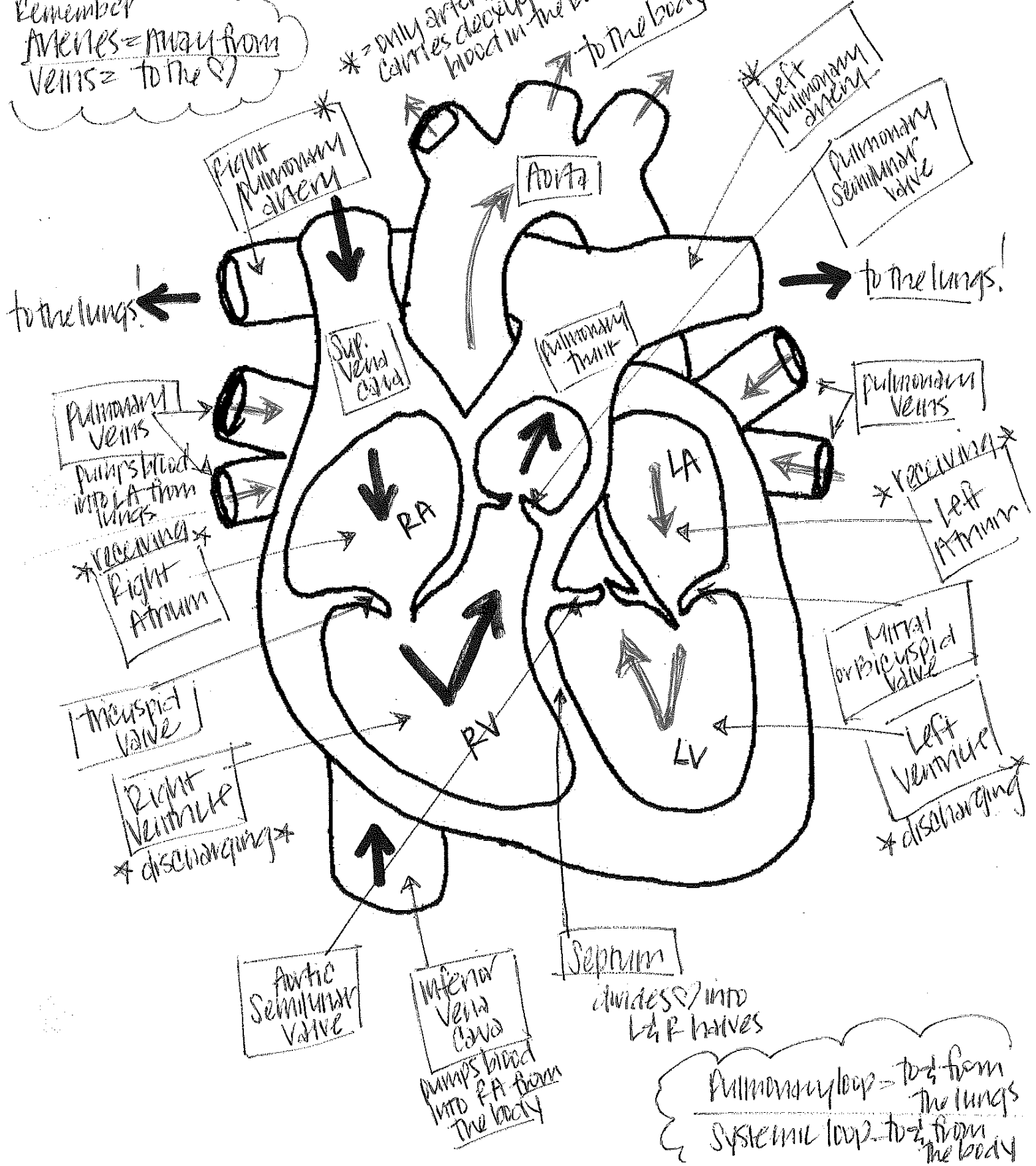


Honors Physiology  
Blood Flow Through the Heart

Name: KEY

Remember  
Arteries = away from  
Veins = to the heart

\* = Only artery that carries deoxygenated blood in the body!  
to the body!



**KEY**

Pulmonary Veins  
pumps blood into LA from lungs  
\*receiving\*  
Right Atrium

Atrioventricular Valve

Right Ventricle  
\*discharging\*

Aortic Semilunar Valve

Inferior Vena Cava  
pumps blood into RA from the body

Septum  
divides into L & R halves

\* Left Pulmonary Artery

Pulmonary Semilunar Valve

Pulmonary Veins

\*receiving\*  
Left Atrium

Mitral or Atrioventricular Valve

Left Ventricle  
\*discharging\*

Pulmonary loop = to & from the lungs  
Systemic loop = to & from the body